

# XLS Heavy Duty Work Class ROV System

[www.pharosoffshoregroup.com](http://www.pharosoffshoregroup.com)



**PHAROS**  
OFFSHORE GROUP

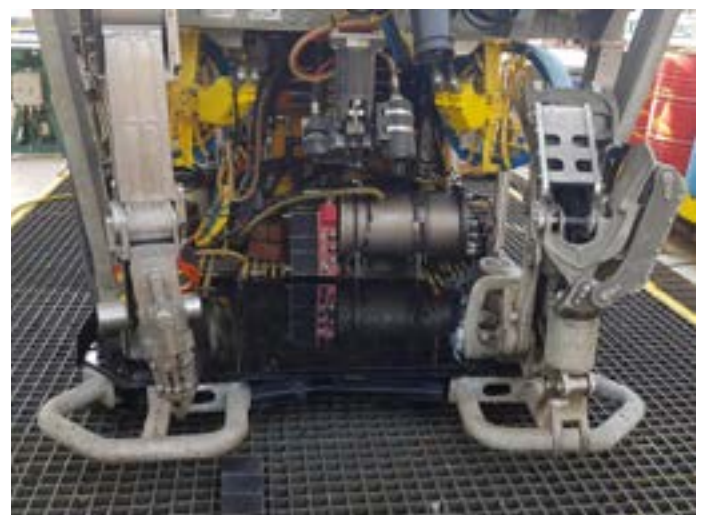
The XLS is the ultimate in hydraulic heavy-duty Dual Construction and Survey Class ROV, designed and built to perform the most exacting operations in the harshest environments.

#### REMOTELY OPERATED VEHICLE

Operating Conditions	Up to and including Sea State 6 (3g)
Depth Rating	3,050m sea water
Hydraulic Power	112kW 150HP
Length	3,050mm
Width	1,780mm
Height	1,930mm
In Air Height	4,400kg
In Seawater	Weight Neutral
Fwd/Aft Bollard Pull	1,100 kgf
Lateral Bollard Pull	1,100 kgf
Vertical Bollard Pull	1,130 kgf
Fwd/Aft Surface Speed	3+ knots
Lateral Surface Speed	2+ knots
Vertical Speed	2+ knots
Payload	250kg with all standard equipment fitted
Through Frame Lift	3,000kg @3g at work skid attachment points
Main Pump	240bar @245 lpm
IHPU Pump	220bar @70 lpm
Propulsion	4 x 380mm horizontal and 4 x 300 mm vertical hydraulic thrusters

#### THRUSTER CONTROL

Manifold	16 station control with 2x High Flow for tooling
Manifold #1	9 station bi-directional IHPU activation valve
Manifold #2	10 station Manifold 8 valves available for options
IHPU Manifold	9 station Manifold 2 valves remotely controlled for pressure and flow
Auto Functions	Heading, Depth, Altitude, Pitch & Roll Auto Positioning (ROV DP) Utilising RDI 1200 Doppler log Tritech ICG & IFG sensors Digiquartz Depth Sensor RDI 1200 Doppler log Real-time Video Channels (8) Spare Fiber Optic Interface Card Slot (2)
Heading Control	
Depth Control	
Altitude Control	
Telemetry	



#### VEHICLE EQUIPMENT : fit as standard

Manipulator	1 x Schilling T4 with wrist camera
Grabber	1 x PSSI TA60
Camera Pan and Tilt	3 x Tritech PT3636-C
Colour Cameras	2 x OE14-366 colour zoom cameras 1 x OE14-106 colour camera 1 x OE14-110 colour camera 1 x Schilling T4 wrist camera
Low Light Camera	1 x OE15-102 SIT Equiv camera
Sonar	1 x Tritech Super Seaking DFS
Emergency Flasher	1 x Novatech Strobe
Emergency RF Beacon	1 x Novatech Beacon

#### TETHER MANAGEMENT SYSTEM

Operating Conditions	Up to and including Sea State 6 (3g)
Depth Rating	3,000 metres sea water
Tether Capacity	380m of 35mm Tether
Hydraulic Power	7.6kW 10HP
Diameter	1980mm
Height	2180mm
In Air Weight	3000kg
In Seawater Weight	2163kg
Depth Measurement	1 x Digiquartz Depth sensor
Lighting	2 x 250W lamps
Video	1 x OE14-110 Colour Camera

#### Get in touch

✉ info@pharos-offshore.com  
☎ +44 (0)1670 281980

📍 Wimbourne Quay, Port of Blyth  
Blyth NE24 1PX

www.pharosoffshoregroup.com

## A - FRAME ASSEMBLY

Type	Hydraulically powered telescopic 'A' frame c/w umbilical sheave, damped snubber and rotating frame
Safe Working Load	16,048kg in water 11,500kg in air
Design Factor	3g
Deployed Reach	4,736mm
Dimensions	8000mm (L) x 2900mm (W) x 9220mm (H-erected)
Weight	17000kg nominal

## UMBILICAL WINCH

Type	Hydraulically powered telescopic 'A' frame c/w umbilical sheave, damped snubber and rotating frame
Safe Working Load	16,048kg in water 11,500kg in air
Design Factor	3g
Deployed Reach	4736mm
Umbilical Storage Capacity	3,000m of 40.5mm diameter umbilical
Dimensions (erected)	8,000mm (L) x 2900mm (W) x 9,220mm (H)
Weight	17,000kg
Control	Local control station



	Dimensions (m)	Weight (kg)	
ROV Control Cabin	6.06 x 2.44 x 2.74	12,000	
ROV/Workshop Cabin	6.06 x 2.44 x 2.59	12,000	
ROV	3.60 x 1.78 x 2.12	4,700	
TMS	1.98 (dia) x 2.18	3,000	
ROV Deck HPU	1.44 x 1.00 x 1.15	2,000	
Winch HPU	2.50 x 1.80 x 1.80	5,000	
Winch	3.00 x 2.92 x 3.74	33,000	
ROV A Frame	8.00 x 2.92 x 2.44	17,000	

## Get in touch

✉ [info@pharos-offshore.com](mailto:info@pharos-offshore.com)  
 ☎ +44 (0)1670 281980

📍 Wimbourne Quay, Port of Blyth  
 Blyth NE24 1PX

[www.pharosoffshoregroup.com](http://www.pharosoffshoregroup.com)